

ISSUE 48

1st Jan- 31st Mar 2025

element14

AN AVNET COMPANY

Connect

nz.element14.com/connect-magazine

INTELLIGENT INTEGRATION

Seamless components for
smarter systems



06
Molex

10
Labfacility

18
Boost manufacturing
efficiency

28
Multicomp Pro

34
ADI

Order Now

0800 90 80 80

nz-sales@element14.com

EDITOR'S NOTE

WELCOME TO THE LATEST EDITION OF CONNECT MAGAZINE

Happy New Year! We're excited to bring you the latest edition of Connect Magazine, your go-to guide in the dynamic world of technology.

In this issue, we're exploring '**Intelligent Integration**' and how it's shaping smarter systems. From our trusted suppliers - Multicomp Pro, Molex, ADI, and Labfacility – to innovative solutions like air leak inspections that boost efficiency and save energy, there's plenty to inspire and inform.

We're deeply grateful for your continued support. Your interest keeps us motivated to bring you relevant insights and helpful resources.

To stay in the loop with future editions and special offers, visit nz.element14.com/connect-magazine#register-with-us or sign up for our emails. And if you'd like to share your thoughts, we're always here to listen at nz-marketing@element14.com.

Let's continue building smarter systems and brighter futures – TOGETHER!



Mamta Kumari |
Marketing Team
element14



Dawn Tan



Scan the QR Code to
explore Connect online

The Publication is produced by element14, a trading name of element14 Pty Ltd, GST Reg No. 55-796 327, PO Box 74342, Greenlane, Auckland, 1546, New Zealand.

T&Cs apply - refer to nz.element14.com/connect-magazine for full terms.

CONTENTS

- 04** INTERCONNECT
- 06** MOLEX
- 08** ELECTROMECHANICAL
- 10** LABFACILITY
- 12** ARTIFICIAL INTELLIGENCE AT THE EDGE
- 13** INDUSTRIAL AUTOMATION & CONTROL
- 15** SBC & DEVELOPMENT KITS
- 17** PASSIVES



18 BOOST MANUFACTURING EFFICIENCY

- 20** TOOLS & PRODUCTION SUPPLIES
- 23** CONNECT NEWS
- 24** TEST & MEASURE
- 28** MULTICOMP PRO
- 31** SEMICONDUCTORS
- 34** ADI
- 36** TOP TECH VOICES PODCAST

Intelligent Integration – Seamless Components for Smarter Systems

As we enter 2025, our commitment to driving innovation and delivering value to our partners is getting stronger than ever. In an industry where technological advancements continuously reshape every facet of business, element14 remains 'unwavering in its support of your success'. With our extensive product portfolio and expertise, we meet today's needs while positioning you for tomorrow's opportunities. We are here to drive your growth and ensure that your business stays ahead of the curve.

This issue highlights our strategic partnership with industry leaders – Multicomp Pro, Molex, ADI, and Labfacility – renowned for their expertise and dedication to advancing technology. From enhanced interconnectivity to sophisticated measurement tools, these solutions are crafted to accelerate your success in a dynamic marketplace.

Don't miss our featured article, '**Boost manufacturing efficiency: How air leak inspections reduce energy wastage**', offering actionable strategies to optimise energy use, reduce costs, and support sustainability goals.

As we forge ahead into 2025, I look forward to deepening our partnership, exploring milestones, and defining the future of innovation together. I invite you to visit our website and explore the products and resources we've carefully curated to support your goals.

Wishing you a prosperous and innovative 2025!



Weidi Zhu
Vice President Sales
APAC

WEIDI'S PICKS

43645-0400 – CONNECTOR HOUSING

- Fully polarised housings
- Positive latching
- Locking tang on terminal



molex

Order Code
307603902

40% OFF \$0.434

Z2-K-1M (IEC) – THERMOCOUPLE

- K-type thermocouple
- Measured temperature maximum: 260°C
- Lead length - Imperial 3.3ft



LABFACILITY

Order Code
707615002

40% OFF \$8.82

ADUM5020-3BRWZ – DIGITAL ISOLATOR

- Output current: 70mA min
- PWM frequency: 625kHz typ
- Line regulation is 2mV/V typ at (IISO = 50mA, VDDP = 3V to 3.6V)



ANALOG DEVICES
AHEAD OF WHAT'S POSSIBLE™

Order Code
403213102

40% OFF \$8.98

GBJ1508 – BRIDGE RECTIFIER

- Maximum RMS voltage: 560V
- Maximum DC blocking voltage: 800V
- 60pF typical junction capacitance per element



multicomp^{PRO}

Order Code
186152602

40% OFF \$2.56

D03124 – DIGITAL MULTIMETER

- 3½ Digit, 2000 count LCD display with backlight
- AC/ DC voltage, AC/DC current, resistance and frequency measurement
- Diode and continuity test functions



DURATOOL

Order Code
321263502

10% OFF \$23.64

E14Community

element14electronics

element14

Find us on the web at:
nz.element14.com

Latest issue:
nz.element14.com/connect-magazine

**All products shown in this publication are subject to Connect's terms & conditions*

INTERCONNECT

Discover the future of connectivity. Explore our comprehensive selection of connectors, cables, wires, and custom cable assemblies.



To view more products, scan the QR code or visit: nz.element14.com/Connect48Interconnect



4831.1210 – PHONE AUDIO CONNECTOR



- 2-pole straight GST cable audio plug
- 2.5mm diameter
- Nickel-plated solder terminal

5% OFF

\$1.68

Order Code
15219702

64322-1039 – AUTOMOTIVE CONNECTOR CONTACT



- Sealed-connection system using matte-seal technology for CP 0.635 and 1.50mm terminals
- Hybrid-connection system using three different terminal sizes: CP 0.635/CP 1.50/CP 2.80mm terminals
- High-density system due to compact-connector

40% OFF

\$0.277

Order Code
183039302

EVO71-MET/PL-BU – CABLE MANAGEMENT TOOL



- Manual tensioning tool with plastic housing
- Length: 191 mm
- ELV compliant

3% OFF

\$555.65

Order Code
393134602

2478170-3 – COMPUTER CABLE



- 9 to 9 female to female 6 feet 28 AWG cable assembly
- Contact resistance: 2 Ohms maximum
- Insulation resistance: 1M Ohms minimum

30% OFF

\$20.42

Order Code
441093002

15300027 – AUTOMOTIVE CONNECTOR HOUSING



- 30A current rating
- Nylon 6.6 (Polyamide 6.6) glass filled body material

45% OFF

\$2.89

Order Code
288810502

BV2 – JAR – BUTT SPLICE



- Blue
- Maximum electrical rating: 75°C 600 Volts
- Connector material: Copper plate

40% OFF

\$27.64

Order Code
413645602

8537-0690 – WIRE SPOOL STORAGE RACK



- Reel diameter: 254mm
- Material : All welded cold rolled steel
- Depth : 5-7/8" (149mm)

20% OFF

\$237.97

Order Code
115383302

FC681446 – DC POWER CONNECTOR



- 2.5mm diameter pin
- Black colour socket

20% OFF

\$2.74

Order Code
228505402

2160000200 – CABLE ASSEMBLY



- No. of positions: 56 Ways
- Product range: NearStack HD 216000 series
- Cable length - Metric: 200mm

20% OFF

\$163.66

Order Code
439786502

50.620 PA/RSW – CABLE GLAND



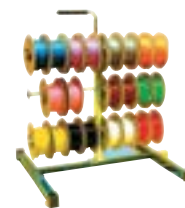
- Quick and easy installation without special tools
- 1.4mm wall thickness
- Temperature range: -20 to 100°C

10% OFF

\$17.00

Order Code
205611802

CABLE TREE JUNIOR – CABLE REEL HOLDER STAND



- Constructed from mild steel with a painted base, plated top and carrying handle
- Tree will hold several reels of varying size
- The branches are designed with no pins or clips to enable reels to be changed quickly and simply

20% OFF

\$279.37

Order Code
431875402

11-03-0006 – EXTRACTION TOOL



- 2.36mm (.093") diameter series pin
- RoHS compliant: Not applicable

\$41.62

Order Code
14360202

WC-240 – CRIMP TOOL



- Ratchet release
- Easy readjustment of load
- Contact locator with insulation-stop

20% OFF

\$710.79

Order Code
361727002

505110-2691 – FPC BOARD CONNECTOR

molex



- Movable terminals ensure more secure contact retention
- Various cable tab and actuator locking styles
- Actuators reinforcements for large circuit sizes

5% OFF

\$1.03

Order Code
250202702

208658-1201 – HDMI CONNECTOR

molex



- HDMI connector, 2.1 Type A, Receptacle
- Right-angle
- 0.37µm gold (Au) plating

20% OFF

\$3.20

Order Code
437922102

T812106A100CEU – IDC CONNECTOR

Amphenol
COMMUNICATIONS SOLUTIONS



- Pitch spacing: 2.54mm
- UL94V-0 Flame-rated glass-reinforced thermoplastic/PBT insulator
- 250VAC/RMS at 60Hz voltage

45% OFF

\$0.642

Order Code
221523002

DGB9F – D SUB CONNECTOR ADAPTER

L-com
an INFINITI® brand



- DB9 Female to DB9 female adapter
- Fully shielded to protect against EMI (electromagnetic interference)
- Gender changer

20% OFF

\$18.90

Order Code
257734102

52015700 – CABLE GLAND

LAPP



- Offers maximum reliability and optimum strain
- Nickel-plated brass body and cap nut
- Firmly locked polyamide clamp cage

40% OFF

\$3.22

Order Code
303471902

2159801001 – I/O CONNECTOR

molex



- NearStack HD connector
- 56 circuits
- 18 differential pair

30% OFF

\$33.30

Order Code
439786402

PX0686 – IEC POWER CONNECTOR

bulgin



- Straight male connector
- Screw terminals
- Black

40% OFF

\$8.18

Order Code
999727002

Seamless components for smarter systems

030-1953-000 – D SUB CONTACT

cannon



- DSUB socket (female) contact
- Copper alloy contact material, gold contact plating
- 20AWG wire gauge, crimp termination style

10% OFF

\$1.19

Order Code
242994102

MP012636 – CABLE GLAND

multicomp PRO



- Provided with lock nut, O-ring and sealing nut
- Working temperature range from -20°C to 80°C
- EICEx, ATEX, CCC certificate

50% OFF

\$5.42

Order Code
424051902

214345-E – IDC CONNECTOR

ERN **STE**



- Female contact
- Pitch spacing: 1.27mm

30% OFF

\$6.01

Order Code
417721502

5580825 – LUG TERMINAL

W **WURTH ELEKTRONIK**
MORE THAN YOU EXPECT



- Tin surface
- Operating temperature: -30°C to 125°C

14% OFF

\$2.66

Order Code
282775202

12.01.1089 – MODULAR CONNECTOR



- UL94V-2 Flammability rating
- 100MΩ Isolation resistance
- Operating temperature: -40°C to 80°C

roline

20% OFF

\$10.20

Order Code
244425602

EXPLORE MORE: nz.element14.com/connect-magazine

220957-0001 – MODULAR CONNECTOR



- T1 Industrial Single-Pair Ethernet (SPE) PCB Jack
- Data rate: up to 10.0 Gbps
- Shield type: Ground plane shield

45% OFF

\$10.05

Order Code
432820802

H4CMC4DI – PHOTOVOLTAIC / SOLAR CONNECTOR



- Quick, easy and secure snap lock mating
- Long-term UV- and ozone-resistant
- Highest current rating in the industry

30% OFF

\$2.87

Order Code
184570202

BXH-001T-P0.6 – CONTACT



- Rated voltage is 250VAC/VDC and rated current is 3A
- Suitable for wire size from 28AWG to 22AWG

40% OFF

\$0.061

Order Code
151630102

55A1121-24-2/6-9 – MULTIPAIR CABLE



- 100m 2-conductor general purpose screened cable
- Conductor material: Tinned copper
- Wire gauge: 24AWG

\$958.56

Order Code
236772102

MP013877 – PHOTOVOLTAIC / SOLAR CONNECTOR



- 30A, 1500VDC rating, class A application
- UL94 V-0 flammability class, 4mm² cross sectional area
- Polyphenylene ether (PPE) housing material

45% OFF

\$5.92

Order Code
440628602

53047-0410 – PIN HEADER



- Friction lock
- Reliable terminal
- Polarised mating geometry

20% OFF

\$0.274

Order Code
973306002

SCDP-FX-9 – CONNECTOR ACCESSORY



- Easy to assemble
- Allows a high packaging density on the chassis
- IP rating: IP65

40% OFF

\$3.44

Order Code
417139802

XHP-4 – CONNECTOR HOUSING



- Number of contacts varies from 2 to 16 pins.
- 10mm pitch with 2 circuits and 5mm pitch with 6 circuit housings are also available.
- Nylon 6, UL94V-0 material

45% OFF

\$6.10

Order Code
151626602

MP013598 – PIN HEADER



- 5.8mm pitch, rated current is 10A maximum
- Fully waterproof with double latch solution
- True crimp and poke solution

40% OFF

\$3.67

Order Code
415445202

Industrial Automation

Embracing the latest sensor, computing, and connectivity technologies for smarter operations.

molex

Explore:
nz.element14.com/Connect48Molex

5915 – CONTACT

ANDERSONPOWER



- For use with the PP 75 and SB 50 series connectors
- Suitable for 12 to 10AWG wire size

35% OFF

\$3.55

Order Code
257609902

231-103/026-000 - PLUGGABLE TERMINAL BLOCK

WAGO



- Universal connection for all conductor types
- Easy cable pre-assembly and on-unit wiring via vertical and horizontal CAGE CLAMP® actuation
- For 'wire-to-wire' and 'board-to-wire' connections

40% OFF

\$4.39

Order Code
264348402

0051001 – WIRE

LAPP



- Halogen-free in accordance with IEC 60754-1
- Flexible fine wire, tinned copper conductor
- Silicone based insulation

40% OFF

\$103.30

Order Code
128596202

NLT4FX – SPEAKER / LOUDSPEAKER AUDIO CONNECTOR

NEUTRIK



- IEC 61984 certified IEC 6236/-1 compliant
- Uses precise Quick Lock system
- Weatherproof built-in gasket meets IP54 protection class in mated condition

20% OFF

\$23.63

Order Code
417174802

03-06-2044 – CONNECTOR HOUSING

molex



- 1.57mm diameter
- Maximum per contact current is 5A
- Natural colour

\$0.631

Order Code
146286902

U.FL-R-SMT-1(10) – RF / COAXIAL CONNECTOR

HRS



- Phosphor bronze with gold plated contacts
- VSWR of 1.3max at 0 to 3GHz
- Operating temperature range: -40°C to 90°C

35% OFF

\$1.04

Order Code
168807702

M81044/12-20-9 – WIRE

TE



- Voltage rating is 600V
- 20AWG (19 x 32) stranded tinned copper conductor
- Temperature rating: 150°C

20% OFF

\$112.73

Order Code
277855102

249-116 – SCREWLESS END STOP

WAGO



- Dimension is 6mm x 28.2mm x 45mm (W x H x D)
- TS 35 DIN rail mounting

45% OFF

\$1.55

Order Code
401611702

Seamless components for smarter systems

1757048 – PLUGGABLE TERMINAL BLOCK

PHENIX CONTACT



- Green colour insulation
- Tin contact surface
- Plug-in direction parallel to the conductor axis

10% OFF

\$5.49

Order Code
370538902

SMA2071A1-3GT50G-50 – RF / COAXIAL ADAPTER

Amphenol® RF



- 50Ω Impedance
- SMA plug to SMA plug straight adaptor
- Brass with gold finish

40% OFF

\$12.12

Order Code
111133902

166-90220 – SLEEVING

HellermannTyton



- Spiral wrap sleeving
- Sleeving material: PVC
- Length: 30.5 m

20% OFF

\$375.11

Order Code
278585402

BVA01/Z0000/02 – UN-FILTERED IEC POWER ENTRY MODULE

bulgin



- 10A maximum current
- Integral single fused fuseholder inlet type
- IEC connector mates with PFO011

30% OFF

\$18.65

Order Code
999730002

PSG91207 – USB CABLE

PRO-SIGNAL



- Reversible Type-C connector
- High speed transfer rates up to 480Mb/s
- Supports charging and data transfer

30% OFF

\$3.82

Order Code
349852102

ELECTROMECHANICAL

Engineered to deliver. Featuring high-performance thermal management systems, switches, relays, and many more.



To view more products, scan the QR code or visit:
nz.element14.com/Connect48Electromechanical



1002MC-LX-10 – CONVERTER



- Compact, industrial design, high environmental specifications, plug-and-play operation
- N-Ring advanced ring technology, increased networking performance
- Full IEEE 802.3, 802.3u, 802.3z, and 802.3ab compliant

10% OFF

\$1,057.20

Order Code
321897802

MP006250 – FUSE



- Fuse current: 1A
- Voltage rating VAC: 250V
- Breaking capacity current AC: 100A

45% OFF

\$0.171

Order Code
360597302

0299050.ZXNV – FUSE



- MAXI-series 50A, 32V time delay fuse
- 0.0011Ω Cold resistance
- 1000A at 32VDC Interrupting rating

20% OFF

\$2.55

Order Code
994317002

YW1B-V4E02R – EMERGENCY STOP SWITCH



- 22mm panel hole diameter
- IP65 protection level
- Screw terminals

40% OFF

\$19.24

Order Code
283385002

209.. – BATTERY CONTACT



- Cell size: A, AA, CR2, CR123A
- Nickel finish/plating
- Spring steel material

45% OFF

\$2.98

Order Code
90870802

BK1-S500-1-R – FUSE



- Blow characteristic- Fast acting.
- Voltage rating VAC-250V
- Fuse size Imperial-0.2" x 0.79"

40% OFF

\$2.83

Order Code
365049302

DIA53S72420A – CURRENT MONITORING RELAY



- 2-Wire connection
- Self powered
- 2 – 20A AC input range

30% OFF

\$105.48

Order Code
182477702

E69C06B – ENCODER COUPLING



- Easy shaft alignment when mounting
- Low torsion rigidity and thus not suitable for high resolution
- 15 mm external diameter

20% OFF

\$39.61

Order Code
160303302

MP007077 – BATTERY CONTACT



- Contact material: Brass
- Contact plating: Nickel plated contacts
- Battery terminals: Snap contact

45% OFF

\$2.69

Order Code
365211602

O21601.6MXP – FUSE



- CE Mark indicates compliance with Low-voltage and RoHS directives
- Available in cartridge and axial lead form
- RoHS compliant and lead-free

50% OFF

\$1.14

Order Code
135454202

OM-HL-EH-TC-K-CAL – DATA LOGGER



- Measurement range: -200 to 1370°C (-328 to 2498°F)
- Support K, J, E, T, R, S, N, B type thermocouple
- Each channel store up to 8,6000 data points

3% OFF

\$848.09

Order Code
404925702

RMA-21-SSV – AIR FLOWMETER



- 51mm scale, stainless steel valve
- Flowmeter range from 1-10LPM air
- Temperature limit of 130°F (54°C)

\$141.95

Order Code
426289102

59-111 – INDUSTRIAL PUSHBUTTON SWITCH



- Wide temperature range up to 125°C
- Panel sealed to IP67
- Overboot for protection against icing

40% OFF

\$9.70

Order Code 51931502

1455T1601BK – METAL ENCLOSURE



- Designed to house P.C. boards or for equipment interfacing
- Sized for standard Eurocards
- P.C. boards mount horizontally by sliding into internal slots extruded into the enclosure body

10% OFF

\$54.17

Order Code 151121902

Seamless components for smarter systems

19N503L63 – MICROSWITCH



- Fully sealed option to IP67
- Wide temperature range from -40°C to +125°C
- Non flammable switch to UL94-V0 rated

20% OFF

\$7.67

Order Code 62472002

1SX1-T – MICROSWITCH



- Long operating life
- Elongated mounting hole for easier, more accurate mounting
- MIL-PRF-8805 qualified

10% OFF

\$41.46

Order Code 145433702

D2HW-BR211H – MICROSWITCH



- Extra-long stroke even without levers (1.4mm OT reference value)
- Case dimensions 22% smaller than conventional models
- Post or screw mounting options

20% OFF

\$3.52

Order Code 206969302

20.22.9.024.0000 – GENERAL PURPOSE RELAY



- 4kV (1.2/50µs) Isolation, coil contacts
- Width: 17.5mm
- Identification label

20% OFF

\$47.72

Order Code 116929002

22.23.9.012.4000 – POWER RELAY



- 4kV (1.2/50µs) Isolation, coil contacts
- 17.5mm Width
- Identification label

20% OFF

\$51.50

Order Code 116929902

HDR-15-24 – AC/DC DIN RAIL POWER SUPPLY



- Short circuit, overload and over voltage protection
- Ultra-slim 17.5mm design
- LED Indicator for power on

5% OFF

\$23.06

Order Code 281563302

7TAI029700R0011 – QUICK DISCONNECT TERMINAL



- Female Disconnect
- Metallic electro tin plated finish
- UL94V-0 Flammability rating

5% OFF

\$52.18

Order Code 120818602

4ELM4 – EARTH STRAP



- Cable length - Metric: 210 mm
- Jacket Colour: Green, Yellow

45% OFF

\$3.68

Order Code 241899702

BLD6343 – ENCLOSURE COOLING



- Black colour
- Resistant to alcohols, ethers, hydrocarbons, weak acids and bases
- Operating temperature range: -40 to 75°C

20% OFF

\$13.37

Order Code 56153802

METSEPM5110 – POWER METER



- Easy to install and operate
- Easy circuit breaker monitoring and control
- Direct metering of neutral current

40% OFF

\$792.72

Order Code 283542102

Q8P1CXXG24E – LED PANEL MOUNT INDICATOR



- Gold faston terminal denotes anode (+), silver terminal denotes cathode (-)
- Pin and wire options are epoxy sealed at the rear of the bezels
- Tricolour LED has red and green LEDs when both are connected, yellow is produced

40% OFF

\$13.33

Order Code 249476702



EXPLORE MORE: nz.element14.com/connect-magazine**PT100 PROBE 3.0 X 50MM 1M LEAD – RTD SENSOR****LABFACILITY**

- Pt100 element to IEC 751 class B
- Temperature range: -50°C to 200°C
- Insulated element in a 3.0mm diameter 316 stainless steel probe construction

40% OFF**\$58.23**Order Code
242030102**WK-150/10M (IEC) – THERMOCOUPLE WIRE****LABFACILITY**

- Tolerance class 2
- Waterproof and very flexible

15% OFF**\$27.84**Order Code
708230702**P100/2528/B – RTD SENSOR****LABFACILITY**

- Single element, Pt100 (100 ohm at 0°C) sensor type
- 0.003°C/mW self heating
- Temperature range: -200°C to 650°C

40% OFF**\$22.87**Order Code
54110202**AM-K-PCB – THERMOCOUPLE CONNECTOR****LABFACILITY**

- Specially designed for PCB mounting
- Provision for cold junction sensor
- Maximum continuous operating temperature 220°C

45% OFF**\$5.65**Order Code
234714002**O10010TD – RTD SENSOR****LABFACILITY**

- Tubular ceramic encased Pt100 elements
- Thin film Pt100 element housed in ceramic sheath, 5mm dia x 35mm long
- Class B IEC 751 approved

30% OFF**\$45.57**Order Code
725574302**AM-K-M – THERMOCOUPLE CONNECTOR****LABFACILITY**

- Yellow colour
- Flat pins
- Continuous operating temperature: 220°C

45% OFF**\$5.88**Order Code
234711602**XF-321-FAR – THERMOCOUPLE****LABFACILITY**

- Thermocouple type K to IEC 60584
- Tip temperature range: -75°C to 250°C
- Twin, twist pair, PTFE insulated over 1/0.2mm conductors, 1 metre wire

45% OFF**\$17.24**Order Code
410074802**DM-303 – RTD SENSOR****LABFACILITY**

- Class A tolerance
- 10mm tails
- 0.1s thermal response

30% OFF**\$7.62**Order Code
128966702**Z2-T-5M (IEC) – THERMOCOUPLE****LABFACILITY**

- Type T fine gauge thermocouple
- Fast response
- 5m long PTFE PFA insulated twin-twisted lead

40% OFF**\$19.63**Order Code
163348402

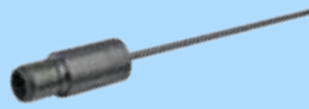
LABFACILITY
 TEMPERATURE & PROCESS TECHNOLOGY

163349002
 Exposed Junction
 Thermocouple

289747002
 L60 Thermocouple
 Fine Wire Welder

859809602
 Pt100 Heavy Duty
 Sensor Probe


420374802
 Hermetically Sealed
 Wire Thermocouple

437340302
 ANSI Standard
 Thermocouple Panel

424657202
 Pt100 with M12 connector
 with plain barrel process connection

 Explore:
[nz.element14.com/
 Connect48Labfacility](https://nz.element14.com/Connect48Labfacility)


Labfacility has supplied element14 for over 30 years, and a wide range of their products are available to purchase online, from stock, directly from element14.

Seamless components for smarter systems

HEDS-5120#A06 – ENCODER CODE WHEEL 



- 500 Counts per revolution
- 1/4" Shaft diameter
- 30000RPM Velocity

\$26.79

Order Code
165487202

26ASD22-01-1-AJS – ROTARY ENCODER 



- Adjustable stops
- Angle of throw is 22.5°
- Silicone rubber panel seal

20% OFF

\$38.52

Order Code
119040202

N31221005 – SWITCH SEALING BOOT 



- For use with pushbutton switches
- Suitable for 9500 series Ø4 x 0.70 (.157 x 0.70) bushing

45% OFF

\$16.54

Order Code
108252102

N36211005 – SWITCH SEALING BOOT 




- For use with 1200, 4700 and 4800 Series
- Suitable for 1200, 4700 and 4800 series Ø12 x 0.75 SI (.472x.075 IS) bushing.

45% OFF

\$14.27

Order Code
108663802

YL50/D50/R/RF/WR – BEACON / SOUNDER 



- Red flame enclosure
- Lens made from flame-retardant polycarbonate plastic
- Flame-retardant ABS plastic enclosure

30% OFF

\$356.75

Order Code
240166202

4650N – AC AXIAL FAN 



- Nominal voltage of 230VAC
- 2650rpm speed
- 19W power consumption

30% OFF

\$49.87

Order Code
959971102

4656Z – AC AXIAL FAN 



- High product quality
- Can be operated at 50 or 60Hz
- IP20 protection rating

30% OFF

\$66.14

Order Code
142672702

QSF-1/4-8-B – PNEUMATIC FITTING 



- QS standard series push in fitting
- Female thread with external hex
- PBT and nickel-plated brass

20% OFF

\$9.20

Order Code
343198002

TA 241911 ENCLOSURE – PLASTIC ENCLOSURE 



- UL94HB flammability rating
- Wire sealing or sealing plugs for added security
- Easy installation

40% OFF

\$38.47

Order Code
142267102



We want to thank you for working with us and believing in us over the past year. We've reached amazing goals together, and it's been an honour to support your requirements.

We look forward to supporting you even more in the coming year. Our focus will remain on improving your experience with element14 through new technologies, reliable services, access to over 1 million products from trusted brands, and improved delivery speeds.

Thank you for choosing element14. Here's to a remarkable 2025!



Kiranjit Kaur
Regional Sales Manager
Australia and New Zealand



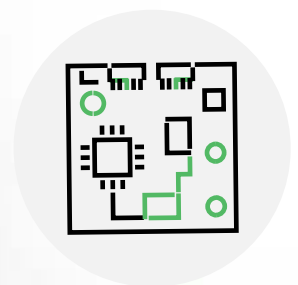
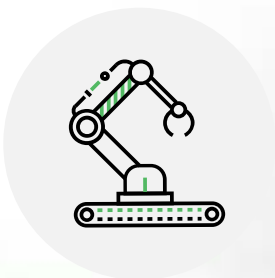
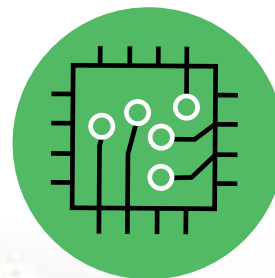


element14

AN AVNET COMPANY

ARTIFICIAL INTELLIGENCE AT THE EDGE

The Hub for Cutting-edge AI Solutions



nz.element14.com/artificial-intelligence



INDUSTRIAL AUTOMATION & CONTROL

Optimise performance. Elevate your systems with our cutting-edge range of motor controls, sensors, PLCs, controllers, and SBCs.



To view more products, scan the QR code or visit:
nz.element14.com/Connect48IAC

540160/556303/556501 – CONTROL THERMOSTAT

multicomp PRO



- Temperature range: 0 to 120°C
- Maximum body temperature: 80°C. Maximum blub temperature: 150°C
- Minimum capillary bending radius: 5mm

30% OFF

\$48.80

Order Code
184634102

NCP18XH103D03RB – NTC THERMISTOR

muRata
INNOVATOR IN ELECTRONICS



- Thermistor mounting SMD
- Minimum operating temperature: -40°C
- Maximum operating temperature: 125°C

45% OFF

\$0.337

Order Code
397757902

METSEPM5100 – POWER METER

Life Is On | **Schneider Electric**



- Control power of 415VAC
- Easy to install and operate
- Easy for circuit breaker monitoring and control

40% OFF

\$682.02

Order Code
283542202

MAX1452AAE+T – SIGNAL CONDITIONER

ANALOG DEVICES
AHEAD OF WHAT'S POSSIBLE™



- Supply voltage range from 4.5V to 5.5V
- Operating temperature range: -40°C to 125°C
- 4mA to 20mA, 0 to +5V (rail to rail), 0.5V to +4.5V ratiometric, +2.5V to ±2.5V outputs supported

20% OFF

\$33.23

Order Code
251692102

DC1765A-A – DEMONSTRATION BOARD

ANALOG DEVICES
AHEAD OF WHAT'S POSSIBLE™



- Kit application type: Signal conditioning
- Application sub type: Clock buffer & level translator
- Kit Contents: Demonstration board LTC6957HMS-1

\$159.14

Order Code
403286602

NRSE104F3380B1F – NTC THERMISTOR

FATON
Powering Business Worldwide



- Thermal time constant (in Air) 7s
- Thermistor type: Bead
- Lead length 35mm

40% OFF

\$0.390

Order Code
413374902

AF/W/S/VC – SOUNDER

Fullcon



- 2-stage Alarm
- Easily fitted within or on control cabinets
- Can be fitted easily to most surfaces

20% OFF

\$39.36

Order Code
243247602

AD8495CRMZ-R7 – SIGNAL CONDITIONER

ANALOG DEVICES
AHEAD OF WHAT'S POSSIBLE™



- Low-cost and easy-to-use
- Pretrimmed for K type thermocouple, input voltage range is -0.2V to -1.6V
- Internal cold junction compensation, voltage noise is 0.8µV p-p at (f = 0.1Hz to 10Hz, TA = 25°C)

40% OFF

\$13.96

Order Code
402997002

EVAL – ADUM3190EBZ – EVALUATION BOARD

ANALOG DEVICES
AHEAD OF WHAT'S POSSIBLE™



- Isolated error amplifier
- Stable over time and temperature (0.5% initial accuracy, 1% accuracy over full temperature range)
- For Type II or Type III compensation networks

2% OFF

\$108.79

Order Code
403325102

USP10982 – NTC THERMISTOR

Littelfuse



- Tight tolerance
- Moisture resistant
- Maximum operating temperature: 80°C

20% OFF

\$3.75

Order Code
290272702

XTR116UA/2K5 – SIGNAL CONDITIONER

TEXAS INSTRUMENTS



- Maximum supply voltage: 36V
- No. of Pins: 8
- Maximum operating temperature: 125°C

\$6.35

Order Code
300542302

MP-05EN-45DEG-NC – THERMAL SWITCH

multicomp PRO



- Manual reset
- Spade terminal
- Silver alloy contacts

40% OFF

\$8.62

Order Code
349293302

EXPLORE MORE: nz.element14.com/connect-magazine

MP-05EN-55DEG-NC – THERMAL SWITCH

multicomp PRO



- Manual reset
- Spade terminal
- Silver alloy contacts

40% OFF
\$7.87

Order Code
349293402

NCP18XH103F03RB – THERMISTOR

muRata
INNOVATOR IN ELECTRONICS



- Operating temperature: -40 to 125°C
- Thermistor Mounting SMD
- Product Range NCP Series

40% OFF
\$1.40

Order Code
245612202

TS-050S R – THERMOSTAT

multicomp PRO



- Thermostat type: Adjustable
- Thermostat mounting panel
- Contact rating 20A at 250VAC

20% OFF
\$50.78

Order Code
254744402

T11A08005U112L310100 – THERMOSTAT SWITCH

MACROTECH



- Normally closed operation
- 10000 switching cycles
- 50mΩ contact resistance

20% OFF
\$4.94

Order Code
187211202

B57861S0103F040 – THERMISTOR

EPCCO



- Short response time
- High measuring accuracy
- Tight B value tolerances available
- Epoxy resin encapsulation

10% OFF
\$3.53

Order Code
67944602

7T.81.0.000.2303 – THERMOSTAT

finder
SWITCH TO THE FUTURE



- AgNi standard contact
- IP20 protection rating
- Operating temperature: 0 to 60°C

30% OFF
\$25.59

Order Code
229578102

11101.0-00 – THERMOSTAT

STEGO



- Sensor element thermostatic bimetal
- Contact type snap-action contact
- Service life 100,000 cycles verified

30% OFF
\$20.42

Order Code
416262202

F20A14005ACFA06E – THERMOSTAT SWITCH

CEATHER



- Sensor housing TO-220
- Product range F20 series

\$10.29

Order Code
288727302

B57861S0103J040 – THERMISTOR

EPCCO



- Short response time
- High measuring accuracy
- Tight B value tolerances

40% OFF
\$1.98

Order Code
277397402

TS-120S R – THERMOSTAT

multicomp PRO



- 5mm × 104mm bulb
- 6.3mm × 0.8mm quick connect terminal
- Temperature range: 0°C to +120°C

30% OFF
\$50.66

Order Code
254744802

T11A16005U112L340100 – THERMOSTAT SWITCH

MACROTECH



- IP00 protection rating
- Contact operation normally closed
- Sensor terminals wire leads

20% OFF
\$5.52

Order Code
187211302

T23A090ASR2-20 – THERMOSTAT SWITCH

multicomp



- 50mohm or less contact resistance
- 90°C switching temperature, 6° reset temperature
- 15A, 125VAC/10A, 250VAC/15A, 250VAC (resistive load) electrical rating

40% OFF
\$2.59

Order Code
100684402

MP-11-35/50/E121B14H22K – THERMOSTAT SWITCH



- Automatic reset thermostat
- Housing type, phenolic height 12mm, phenolic housing and shield material
- 85°C (maximum off temperature), 100°C (maximum on temperature)

40% OFF
\$3.54

Order Code
420577102

multicomp PRO

SBC & DEVELOPMENT KITS



Unleash your potential. Dive into our extensive lineup of single board computers, add-on modules, and development kits, tailored for limitless creativity.



To view more products, scan the QR code or visit: nz.element14.com/Connect48SBC

DFR0026 – ADD-ON BOARD



- Wide voltage range: 3.3V to 5V
- Illumination range: 1-6000 Lux
- 15us Response time

\$4.20

Order Code
294608502

RPI NOIR CAMERA BOARD – DAUGHTER BOARD



- 8 Megapixel camera capable of taking infrared photographs of 3280x2464 pixels
- Capture video at 1080p30, 720p60 and 640x480p90 resolutions
- All software is supported within the latest version of Raspbian Operating System

\$24.35

Order Code
367784602

AKX00032 – DEVELOPMENT BOARD



- 8 digital i/p channels, 8 digital output channels, 3 analogue i/p channels, 4 analogue O/P channels
- 2 encoder channels ABZ
- High speed CAN

\$521.77

Order Code
377589202

DFR0205 – EVALUATION BOARD



- Maximum output power: 25W
- Three different output interface
- One interface of original voltage output

3% OFF

\$14.12

Order Code
376997002

CM4IO – COMPUTE MODULE



- External +12V PSU
- 2 x full-size HDMI 2.0 connectors
- Gigabit Ethernet RJ45 with POE support

\$56.81

Order Code
356349102

RASPBERRYPI-SENSEHAT – DAUGHTER BOARD



- Gyroscope – angular rate sensor: $\pm 245/500/2000$ dps
- Accelerometer – Linear acceleration sensor: $\pm 2/4/8/16$ g
- Magnetometer – Magnetic Sensor: $\pm 4/8/12/16$ gauss

\$48.69

Order Code
248309502

K8060 – 200 WATT AUDIO AMPLIFIER KIT



- Full discrete design using Epitaxial Darlington transistors
- DC supply circuit on board with LED indication
- Overload and short circuit protection

\$18.91

Order Code
280429202

SC0626 – POWER SUPPLY UNIT



- Featuring a captive micro USB cable
- White colour Type I Australia, New Zealand, China plug style
- 1.5m 18AWG output cable

\$12.99

Order Code
383850402

AFX00001 – ARDUINO BOARD MODULE



- On-board Ethernet and USB-C@ ports, plus RS485 connectivity
- STM32H747XI Dual ARM@ Cortex@ MCU
- Eight configurable digital/analogue (0-10V) inputs

10% OFF

\$435.17

Order Code
414184502

ABX00028 – DEVELOPMENT BOARD



- Operating voltage of 5V
- Input voltage range: 7V to 21V
- Clock speed of 20MHz

\$19.90

Order Code
340469002

DFR0100 – EVALUATION BOARD



- Clearly labelled
- Prototype easily, full bundle, free upgrade

\$66.95

Order Code
351797102

SC0623 – POWER SUPPLY UNIT



- 120mVp-p ripple & noise, $\pm 2\%$ line regulation and $\pm 5\%$ load regulation
- 12.5W maximum power, 2.5A nominal load current and 0.0A minimum load current

\$12.99

Order Code
383850102

EXPLORE MORE: nz.element14.com/connect-magazine

RPI5-STARTER KIT-4GB-EU. — multicom^{PRO}
RASPBERRY PI 5 STARTER KIT



- 2.4GHz quad-core 64-bit Arm Cortex-A76 CPU
- VideoCore VII GPU, supporting OpenGL ES 3.1, Vulkan 1.2
- Dual 4Kp60 HDMI output (HDR + HEVC decoder)

\$162.29

Order Code
434179102

ABX00063 — SBC



- 3.3V circuit operating voltage
- 6-24V input voltage (VIN)
- 8mA DC current per I/O pin

\$119.89

Order Code
414519202

DFR0762 — IO EXPANSION SHIELD



- All pins brought out, no soldering required
- Supports various gravity sensors and modules
- 3.3V to 5.5V PH2.0 power port, applicable to portable projects

\$7.91

Order Code
397413502

114991193 — USB TO CAN ANALYSER ADAPTER



- Optimised the conversion protocol, improved conversion efficiency
- Saving the customised settings automatically
- Customised receiving ID, easy to debug

5% OFF

\$38.40

Order Code
393209102

RPI5 — STARTER KIT-8GB-EU. — multicom^{PRO}
RASPBERRY PI 5 STARTER KIT



- 2.4GHz quad-core 64-bit Arm Cortex-A76 CPU
- VideoCore VII GPU, supporting OpenGL ES 3.1, Vulkan 1.2
- Dual 4Kp60 HDMI output (HDR + HEVC decoder)

\$194.75

Order Code
434179202

900-83668-0000-000 — SOM



- 1x1 + 1x4, total 80 GT/s (PCIe Gen3)
- 10/100/1000BASE-T Ethernet connectivity
- Voltage input of 5V, module power of 10W - 15W

\$777.36

Order Code
412646802

TEL0138 — USB GPS RECEIVER



- Chip: UBX-G7020-KT
- Frequency: L1, 1575.42MHz/ L2, 1561.10MHz/ L3, 1602.00MHz
- Baud Rate: 4800, 9600, 19200, 38400, 57600, 115200bps

\$21.59

Order Code
376989402

G950-01456-01 — USB ACCELERATOR



- USB 3.0 (USB 3.1 Gen 1) type-C socket
- Supports Linux, Mac, and Windows on host CPU

\$124.46

Order Code
358303302

A000062 — SBC



- Input voltage (recommended) range from 7V to 12V
- 3.3V operating voltage
- 96KB of SRAM

\$73.30

Order Code
225086102

DFR0063 — EXPANSION BOARD



- Back lit (Blue with white char colour)
- Supply voltage: 5V
- Interface: I2C/TWI x1, Gadgeteer interface x2

3% OFF

\$18.74

Order Code
376997302

FIT0737 — USB TO RS485 MODULE



- Asynchronous half duplex (RS485) self-adaption mode of working
- Dimension is about 85mm x 23mm x 13mm

\$13.81

Order Code
376986702

ZYMKEY 41 — HARDWARE SECURITY MODULE



- Multifactor device identity and authentication
- Data encryption and signing engine
- Key generation and secure storage

\$71.41

Order Code
294771602

ASM-1900180-11- PROFESSIONAL ENCLOSURE



- Moulded from recyclable ABS, manufactured in the UK, white colour
- 3-piece construction
- Integrated power button

20% OFF

\$5.01

Order Code
431345202

multicom^{PRO}

PASSIVES



Drive efficiency with precision and reliability. Explore our passives series, from capacitors to inductors, filters, resistors, and EMC/RFI suppressions.



To view more products, scan the QR code or visit: nz.element14.com/Connect48Passives

500R07S1R8BV4T – CAPACITOR



- Product range: S series
- Operating temperature: Max 125 C

50% OFF

\$0.155

Order Code
188530602

RH025100R0FE02 – WIREWOUND RESISTOR



- Mounts on chassis to utilize heat-sink effect
- Molded construction for total environmental protection
- Complete welded construction

20% OFF

\$7.71

Order Code
115496402

CKG57KX7S2A156M335JH – SMD MULTILAYER CERAMIC CAPACITOR



- Product width: 5mm
- Operating temperature min: -55°C
- MSL: MSL 1 - unlimited

30% OFF

\$5.16

Order Code
364926502

SL22 4R014 – THERMISTOR



- 94s thermal time constant
- 32.4mW/°C dissipation constant

30% OFF

\$2.08

Order Code
165345602

MCFYU6104Z6 – CERAMIC DISC CAPACITOR



- Radial leaded ceramic disc capacitors
- Large capacitance in small size
- Linear temperature coefficient

50% OFF

\$0.146

Order Code
941188702

PME271M547MR30 – SAFETY CAPACITOR



- Approvals: ENEC, UL, cUL / Rated voltage: 275 VAC 50/60 Hz
- Capacitance range: 0.001 - 0.6 µF / Capacitance tolerance: M = ±20% (for C ≤ 0.1 µF), K = ±10% (for C < 0.1 µF) / Lead spacing: 10.2 - 25.4 mm

30% OFF

\$1.62

Order Code
971744702

B82144A2106J000 – RF CHOKE



- Wide inductance value: 1µH to 10000µH
- Rated current: 20mA to 2200mA
- Operating temperature: 40°C

40% OFF

\$0.597

Order Code
51792602

5943003801 – FERRITE CORE



- Thermo-set plastic coated parts can withstand a minimum breakdown voltage of 1000Vrms
- Core type: Toroid
- Core material grade: 43

20% OFF

\$13.97

Order Code
178125702

BFC247076105 – GENERAL PURPOSE FILM CAPACITOR



- Rated DC voltage of 63V, 100V, 250V, 400V
- Rated AC voltage of 40V, 63V, 160V, 220V
- Available in ±10% and ±5% tolerance

40% OFF

\$4.21

Order Code
116604302

RC0603FR-0710KL – SMD CHIP RESISTOR



- Reduce environmentally hazardous waste
- High component and equipment reliability
- Saving of PCB space

50% OFF

\$0.011

Order Code
923860302

MMF25SFR15R – SURFACE MOUNT MELF RESISTOR



- Voltage rating: 200 V
- Qualification: AEC-Q200

50% OFF

\$0.180

Order Code
418064402

B72207S0250K101 – TVS VARISTOR



- High surge current ratings up to 8KA
- Peak energy range from 0.3J to 410J
- UL, CSA, VDE, CQC (S05/07, S10/S14, S20), IEC approved

50% OFF

\$0.367

Order Code
100437002

*All products and prices are subject to availability and may change | All prices in NZD | GST excluded

*All savings shown are against the price on the [element14 website](https://nz.element14.com) as of November 2024 and are valid until 31st March 2025

BOOST MANUFACTURING EFFICIENCY - HOW AIR LEAK INSPECTIONS REDUCE ENERGY WASTAGE

Author: element14 Technical Marketing Team

Pneumatic, or compressed air-driven, systems are used in a wide range of applications, including automated industrial equipment, processes, and motion control across various industries. However, compressed-air systems frequently suffer from leakage, leading to energy waste, reduced productivity, increased downtime, and a higher carbon footprint.

Compressed-air systems consume around 10% of all industrial electrical consumption, or 8.8 TWh each year, resulting in CO2 emissions of 3,100 kt/year (Source: Department for Energy Security and Net Zero, UK). Addressing air leak issues is essential for improving energy efficiency, sustainability, and productivity. This article highlights the importance of air leak inspections and how advanced air leak detection equipment assists in locating and repairing leaks.

Causes of compressed air leaks

Air leaks in compressed air systems can result from various design, maintenance, and operation factors. Common causes include:

- **Worn or damaged components:** Continuous use leads to wear and tear on seals, gaskets, hoses, and fittings. Over time, these parts can deteriorate and develop gaps or cracks that allow air to escape. Seals and gaskets are also crucial for ensuring airtight connections, but they can become brittle or worn down, especially in high-pressure environments.
- **Improper installation:** Incorrect pipe fittings, joints, or coupling assembly can leave gaps or misalignments that allow air to escape. Poorly routed piping and installed double-ferrule compression fittings are particularly prone to leaks.
- **Poor maintenance:** Neglecting routine maintenance or delaying minor repairs on components like hoses, valves, pipes, joints, etc., can also lead to significant air loss.

- **Mechanical damages and environmental effects:**

Vibrations from pneumatic systems, especially those with reciprocating compressors, can damage pipes and fittings. Repeated heating and cooling cycles can cause materials to expand and contract, leading to cracks or loosening of joints. Environmental factors such as moisture, extreme temperatures, or chemical exposure can cause corrosion, increasing the risks of leaks.

Calculating the cost associated with compressed air leaks:

Compressed air systems are present in almost every industrial facility, and leaks are inevitable. In a well-maintained system, the air leakage percentage should remain below 10%, but poorly maintained systems can lose between 20% and 30% of their air power. In some extreme cases, more than 80% of the air can be lost through leaks.

Compressed air systems are responsible for approximately \$5 billion annually in energy expenses, which represents a significant amount of wasted energy and money. In addition to higher energy costs, air leaks negatively affect compressed air users by reducing productivity and shortening equipment lifespan. So, it is necessary to estimate the amount of leakage in the pneumatic system for preventive actions. The energy cost for each leak can be calculated using the following formula:

Annual cost of leaks = Leakage rate (cfm) X kW/cfm X operating hours X \$/kWh

For compressors equipped with start/stop controls, estimating the amount of leakage in the system can be done quickly. This process involves starting the compressor without demands on the system and ensuring that all air-operated end-use equipment is turned off.

Multiple measurements are taken to calculate the average time the compressor needs to load and unload. The compressor will cycle on and off due to air leaks, which cause a drop in pressure as air escapes. The total leakage, expressed as a percentage, can then be determined using the following formula:

$$\text{Leakage (\%)} = ((T \times 100)) / ((T + t))$$

Where: **T = on-load time (minutes)**

t = off-load time (minutes)

Leakage may be estimated in systems that use different control strategies if a pressure gauge is positioned downstream of the receiver. This approach involves estimating the system's total volume, including any downstream secondary air receivers, air mains, and piping (V, in cubic feet). The system should be brought to its normal operating pressure (P1, in psig) and allowed to return to this state. Afterwards, the time (T, in minutes) it takes for the system to drop to a lower pressure (P2, in psig), typically around half of the operating pressure, should be measured. The leakage rate can then be calculated using these measurements.

$$\text{Leakage (cfm free air)} = ((V \times (P1 - P2)) / (T \times 14.7)) \times 1.25$$

A multiplying factor of 1.25 is used to adjust for leakage to the normal system pressure, which reduces leakage when the system pressure decreases. If leakage exceeds 10%, it suggests a scope for system improvement. It is recommended that these tests be conducted every quarter as part of a routine leak detection and repair program.

Detecting air leaks:

Detecting air leaks in the compressor is essential for energy conservation and regular maintenance. The following methods are commonly used for air leak detection:

- **Listening:** This is the simplest and the most cost-effective method, relying on the ability to hear a hissing or whistling sound from the pneumatic line. However, this method only works for large leaks in easily accessible areas. It can be challenging to use in noisy environments, limiting its scope.
- **Soap water test:** This method involves applying soapy water to suspected leak points. If a leak is present, soap bubbles will form at the location of the air leakage. Although this method is simple, it is time-consuming and needs to provide more information on the size or volume of the leak.
- **Acoustic method:** The most effective and efficient way to detect air leaks is using acoustic imaging cameras. These cameras can identify leaks in various equipment, including pipes, valves, and pneumatic tools, even in noisy or hard-to-reach areas. Acoustic imaging allows testing while equipment runs and provides fast, accurate results.

Acoustic imaging process:

When pressurized gas leaks, it moves from a high-pressure laminar flow toward low-pressure turbulence, creating a vortex. As the vortex breaks, it radiates ultrasonic energy. Acoustic imaging cameras, equipped with an array of tiny, super-sensitive microphones, capture this energy and create a sound spectrum based on decibel levels per frequency. An algorithm then overlays a sound image onto a visual image, pinpointing the location and size of the leak. This allows for real-time analysis, enabling manufacturers to identify and fix leaks quickly.

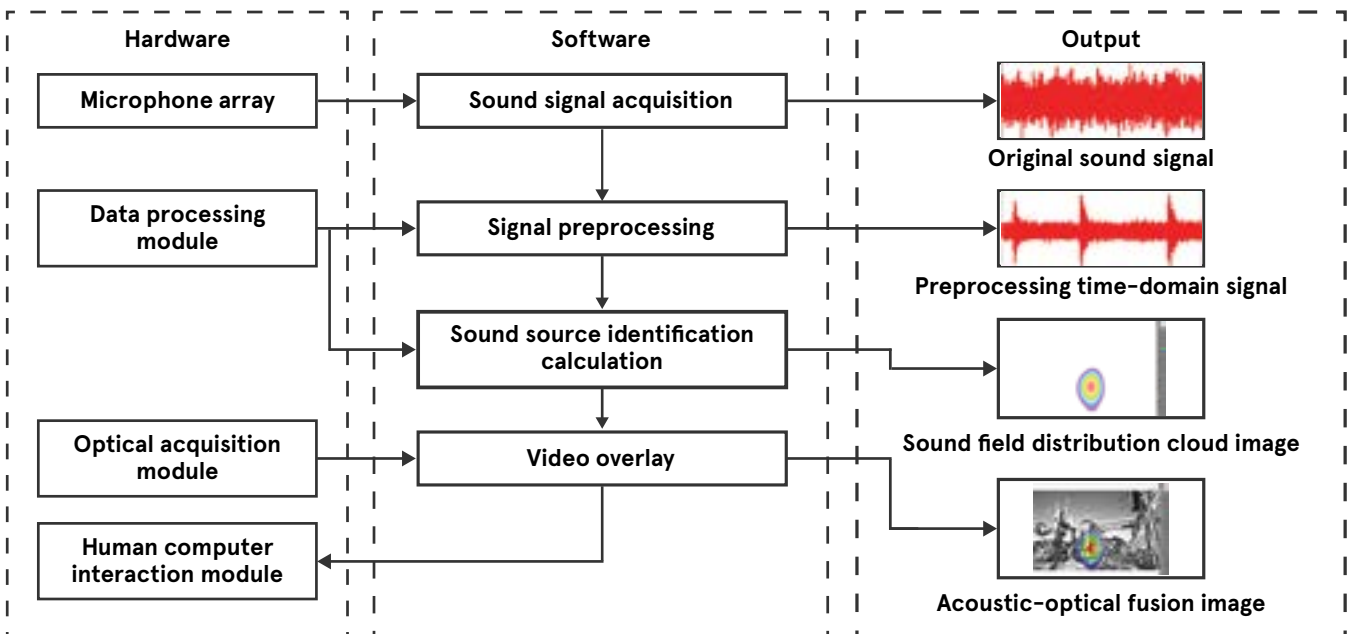


Figure 1: Functional diagram of acoustic imaging system



To continue reading Boost manufacturing efficiency- How air leak inspections reduce energy wastage, scan the QR code, or visit:

nz.element14.com/boost-manufacturing-efficiency-how-air-leak-inspections-reduce-energy-wastage-trc-ht

TOOLS & PRODUCTION SUPPLIES

Driving success with the right tools. Browse our diverse selection of engineering tools and production supplies, including hand tools, soldering equipments, 3D printing solutions, adhesives, and fasteners.



To view more products, scan the QR code or visit: nz.element14.com/Connect48ToolsandProduction



CR-10S PRO – 3D PRINTER

CREALITY



- Power supply is 100-240VAC, 5.9A, 50/60Hz input, 24VDC output
- Double gear extrusion mechanism, imported PTFE tube
- V2.4.1 motherboard, diversified levelling

3% OFF

\$882.08

Order Code
294549002

TSE397-C 100G – ADHESIVE SEALANT

ADHESIVE



- Non-corrosive to metals: meets MIL-A-46146B corrosion test
- Low odour releases an alcohol vapor during cure, clear colour
- Primerless adhesion to many substrates

10% OFF

\$50.57

Order Code
322736002

AC-BP – BRASS PAD

METCAL



- Accessory type: Brass pad
- Product range: MFR-1100
- For use with: Metcal MFR series soldering, desoldering & rework systems

5% OFF

\$23.69

Order Code
116155102

PSG-BB-400 – BREADBOARD

PRO SIGNAL



- Positive and negative power rails
- Self adhesive mounting
- Clip in design can be expanded

10% OFF

\$2.14

Order Code
250376502

CR-10S – 3D PRINTER

CREALITY



- Dual Z axis lead screw rod which makes printing quality better and more stable
- CR-10S mainboard with filament monitor function
- CR-10S has the ability to resume prints even after a power outage or lapse occurs

\$746.77

Order Code
284362702

MP-006-0012F – ANTISTATIC BAG

multicomp PRO



- Sold in packs of 100
- Length - Imperial: 8"
- Seal type: Heat seal

30% OFF

\$29.90

Order Code
168780702

D03302 – BRASS WOOL SOLDERING TIP CLEANING BALL

URATOOL



- Replacement brass wool ball
- Accessory type: Brass wool
- For use with: Soldering irons

30% OFF

\$2.76

Order Code
321263802

T3973 210 – CABLE CUTTER

cx



- Independently VDE certified, safe up to 1000VAC
- Razor sharp, induction hardened cutting edges for outstanding performance
- Special alloy steel construction

10% OFF

\$75.85

Order Code
437851502

SF 7240, 90ML – ADHESIVE

LOCTITE



- Basic copper salt chemical
- Reactive methacrylate monomer solvent
- Blue-green liquid appearance

30% OFF

\$34.69

Order Code
343873302

004-0012F – ANTISTATIC BAG

multicomp PRO



- Two layer extrusion with calendar role to thermoform bubble
- Soft texture and flexible material
- Width - Metric 101.6mm

45% OFF

\$4.67

Order Code
168783002

MC01003 – BREADBOARD

multicomp



- 1x 230 contact terminal strip
- 2x 20 contact distribution strips
- Four mounting holes: Ideal for building into other equipment

20% OFF

\$2.11

Order Code
250375102

T3973 160 – CABLE CUTTER

cx



- Overall length: 160mm
- For use with: copper and aluminium cables
- Cutting capacity max: 9mm

10% OFF

\$75.85

Order Code
437851402

500-196-30 – DIGITAL CALIPER



- Flat depth bar, thumb roller
- ±0.001" max permissible error (E MPE)
- ±0.002" maximum permissible error (S MPE)

10% OFF

\$338.76

Order Code
152121602

05020234001 – COMBINATION WRENCH SET



- With its strong magnet, the rail holds securely to metal surfaces
- Clips hold the tools perfectly
- Especially suitable for tight spaces

Image for illustration only; see product description.

20% OFF

\$114.97

Order Code
437788702

MP740693 – DESOLDERING BRAID



- Pure copper braid construction
- Coated with rosin flux on the surface
- Quickly and thoroughly remove solder

45% OFF

\$2.02

Order Code
364996702

885374510 – FIBRE OPTIC CABLE



- Fibre optic connector A: LC Duplex
- Product range: 88537 series
- Fibre type: Multimode

30% OFF

\$90.81

Order Code
388459902

76991500 – DIGITAL CALIPER



- Durable stainless steel construction
- Zero calibration switch with automatic on/off
- Easy to read LCD screen

10% OFF

\$39.98

Order Code
252901702

DM2.5-CWA2WAS100BS4463 – CRINKLE WASHER



- Internal diameter: 2.8mm
- External diameter: 5.8mm
- Fastener material: Stainless Steel A2

5% OFF

\$3.70

Order Code
250599602

7874B – DESOLDERING PUMP



- Antistatic housing
- Facilitates accurate printed circuit repair and cleaning
- Can be used with soldering iron

3% OFF

\$29.26

Order Code
41902302

71201211 – HEAT SHRINK TUBING



- WA-HST polyolefin heat shrink tube with 2:1 shrink ratio
- Black colour heat shrink tube
- Operating temperature range from -55 to +105°C

30% OFF

\$1.74

Order Code
375768802

Seamless components for smarter systems

500-184-30 – DIGITAL CALLIPER



- Range from 0-150mm
- Character height: 9mm (alleviation of fatigue with the high-contrast LCD)
- Slider provides smooth, stable and comfortable operation

20% OFF

\$286.77

Order Code
283171802

MP740692 – DESOLDERING BRAID



- Copper 90%, Rosin 10%
- Responds up to 50% faster than conventional braids
- Length: 1.5m

45% OFF

\$1.57

Order Code
364996602

8PK-366D – F – DESOLDERING PUMP



- Rugged metal construction
- Antistatic tip
- Duratool products are rated 4.1 out of 5 stars

40% OFF

\$7.56

Order Code
312563402

71201616 – HEAT SHRINK TUBING



- 15kV/mm withstanding voltage
- Shrink tubing / boot material-PO (Polyolefin)
- Modification of length after shrinking ±5%

30% OFF

\$1.82

Order Code
375769302

RM765/W – MARKER MAGNET



- Durable magnet material in a white coloured plastic shell
- Ideal for display or holding applications on noticeboards, cabinets, fridges etc
- 20mm diameter



20% OFF

\$8.01

Order Code
453131402

EXPLORE MORE: nz.element14.com/connect-magazine

VDV226-005 – CRIMP TOOL



- Modular crimp-conn installation tool for voice and data application with Pass-Thru RJ45 conn plug
- On-tool wiring guide helps minimise wiring errors
- Fast, reliable RJ45 Pass-Thru™ modular crimper installs connectors for data applications

20% OFF

\$100.44

Order Code
430830902

05020233001 – COMBINATION WRENCH SET



Image for illustration only; see product description.

- With its strong magnet, the rail holds securely to metal surfaces, can also be bolted to the wall
- Clips hold the tools perfectly, especially suitable for tight spaces
- Special open-end geometry expands the placement possibilities of the tool

20% OFF

\$262.40

Order Code
437788502

T3203 022 – HOLE SAW



- High tension spring for rapid slug ejection
- 22mm width, 22mm depth, 90mm height

10% OFF

\$23.17

Order Code
426127102

K7HP.IT – TWEEZER KIT



- 180.0mm OAL, 105.0mm width, 16.0mm height
- No of tweezers: 7
- Tweezer body material: Anti magnetic, anti acid stainless

5% OFF

\$338.84

Order Code
440627902

63811-1000 – CRIMP TOOL



- Ergonomic soft grip handles for comfortable crimping with small handle spread
- Accepts material thicknesses of 0.15mm to 0.40mm and conductor barrel length of 2mm to 3.5mm

10% OFF

\$110.95

Order Code
170392802

PVC TAPE 1920B – ELECTRICAL INSULATION TAPE



- Tested in accordance with the requirements of BS 3924 (1980) CAT 2
- Total tape thickness: 5.9 mil (0.15 mm)
- Tape backing material PVC (Polyvinyl Chloride)

45% OFF

\$2.43

Order Code
15234602

TZE-131 – LABEL PRINTER TAPE



- 12mm wide, 8m long
- Black text on clear label
- High-quality Brother genuine supplies, tested to be resistant to fading, water, chemicals, abrasion and temperature extremes

20% OFF

\$25.45

Order Code
60348002

DM4-PWFI-BG10 – WASHER



- Internal diameter: 4.4mm
- Fastener material: fibre
- External diameter: 9mm

20% OFF

\$4.53

Order Code
250598902

HT-214D – CRIMP TOOL



- Length:241mm
- Weight:495g
- Black oxide finishing

20% OFF

\$21.48

Order Code
312633002

1061152100 – FIBER OPTIC ADAPTER



- Convert from fibre optic connector: LC duplex
- Convert from gender: jack
- Product range: 106115 series

5% OFF

\$41.03

Order Code
388457602

TZE-241 – LABEL PRINTER TAPE



- 18mm wide, 8m long
- Compatible with Brother P-touch label printers
- Tape material: PET (Polyester) film

20% OFF

\$33.90

Order Code
60364802

STTC-138 – SOLDERING IRON TIP



- 1,5 mm tip/ nozzle width
- 9,9 mm tip/ nozzle length
- Style: chisel, cone 30°

3% OFF

\$51.75

Order Code
495066502

MP009732 – WIRE STRIPPER



- Making body: Injection molding
- Shape of cutting edge: Cross cut
- Color of body: Black, red



30% OFF

\$26.31

Order Code
397216502

Stay up-to-date on the latest tech advancements and breakthroughs that are transforming industries and driving progress, offering everything from inventive solutions to cutting-edge technologies. – **Technical Marketing Team**



A selection guide for digital multimeters

Digital Multimeters (DMMs) are useful when it comes to measuring different electrical parameters across various applications. Different types of DMMs are available, from the immensely portable handheld meters to the common benchtops and the highly useful clamp meters.



nz.element14.com/a-selection-guide-for-digital-multimeters-trc-sg



A comprehensive guide to Electric Vehicle (EV) charging solutions

This guide breaks down the complexities of EV charging technology into simple, easy-to-understand concepts. Whether you're a beginner or an experienced professional, our comprehensive guide provides all the information you need to create efficient and reliable charging stations.



nz.element14.com/a-comprehensive-guide-to-ev-charging-trc-wp



A comprehensive guide to proximity sensors for industrial applications

Proximity sensors, such as ultrasonic sensors, capacitive sensors, magnetic sensors, optical sensors, and inductive sensors, play a vital role in identifying the presence or absence of objects in dynamic environments.



nz.element14.com/a-comprehensive-guide-to-proximity-sensors-for-industrial-applications-trc-ar



Whitepaper & solution guides

Timely insights are windows to advanced applications and future industry trends. Our whitepapers and eBooks help you plan for the future and sharpen your skills. To stay in tech, your journey begins here.



nz.element14.com/whitepaper-technical-resources

TEST & MEASURE



Achieve precision in every measurement. We carry oscilloscopes, spectrum analysers, digital multimeters, and a variety of accessories- all designed to enhance accuracy and reliability in your testing processes.



To view more products, scan the QR code or visit:
nz.element14.com/Connect48TestandMeasure

R&S HMC8012 – BENCH DIGITAL MULTIMETER



- Simultaneous display of 3 measurements, e.g. DC + AC + Statistics
- Up to 200 measurements per second
- DC basic accuracy 0,015%

5% OFF

\$2,111.10

Order Code
240877102

MP731065 – DIGITAL MULTIMETER



- High precision
- Compact design
- True RMS

20% OFF

\$243.17

Order Code
434742402

BK880 – LCR METER



- 40,000 counts resolution on primary and 10,000 counts resolution on secondary display
- L, C, R, and Z (BK879B & BK880 only) primary measurements
- Automatic calculation of secondary parameters D, Q, Theta, ESR (Theta/ESR for 879B & 880 only), and DCR (BK880 only)

3% OFF

\$942.39

Order Code
277032202

PICOSCOPE 3403D – PC USB OSCILLOSCOPE



- 64MS buffer memory
- 100000 waveforms per second
- USB 3.0 connected and powered

3% OFF

\$1,476.76

Order Code
246021902

EDU36311A-AU – BENCH POWER SUPPLY



- Triple output model with two channels up to 30V and one channel up to 6V
- Low output ripple and noise
- Excellent programming / readback accuracy

2% OFF

\$1,677.07

Order Code
438280602

MP721075 – DIGITAL OSCILLOSCOPE



- Vertical resolution (A/D) max: 8bits
- Bandwidth: 100MHz
- Sample rate: 1GS/s

20% OFF

\$2,057.91

Order Code
435102402

72-8155 – LCR METER



- Supplied with a battery, test clip, holster
- Inductance measure max: 20H
- Test frequency max: 1kHz

20% OFF

\$72.60

Order Code
128364302

MP730679 – HANDHELD DIGITAL MULTIMETER



- Large, backlit LCD screen with 22,000 count display
- High resolution analogue pointer
- Full scale overload protection

20% OFF

\$194.33

Order Code
367728802

72-7730A – DIGITAL MULTIMETER



- 100KHz bandwidth
- Auto ranging
- Duty cycle: 10% to 90%

20% OFF

\$302.65

Order Code
210003502

MP720024 EU-UK – DIGITAL OSCILLOSCOPE



- 12 bits high vertical resolution
- 8" large clear TFT display (800x600)
- Ultra-thin body design, less space accommodation

20% OFF

\$730.90

Order Code
310758202

TA041 – OSCILLOSCOPE PROBE



- Bandwidth: DC to 25 MHz (-3 dB)
- Attenuation ranges: 10:1 / 100:1
- DC accuracy: ±2%

3% OFF

\$685.27

Order Code
166734302

MP720780 – HANDHELD DIGITAL STORAGE OSCILLOSCOPE



- Digital multimeter function offers 4½ digits and V, A, ohm, farad, diode, continuity testing modes
- 250MSa/s sample rate
- Sample & peak detect acquisition model

20% OFF

\$207.93

Order Code
370326302

PP222 – DATA LOGGER



- Measures and records up to eight thermocouples at once
- 20bit resolution and high accuracy
- Supports all popular thermocouple types

3% OFF

\$681.01

Order Code
284648002

931804100 – BANANA TEST CONNECTOR



- 4 mm system
- Sockets
- Solder connection

40% OFF

\$5.94

Order Code
117645002

TP1 BLACK – BINDING POST



- Non touch proof
- Models available in different colours
- Rated current of 15A

30% OFF

\$2.59

Order Code
181581902

MP760862 – CLAMP-METER



- 3 in 1 mini clamp meter with 2400 count LCD display
- 18mm jaw opening
- Manual function select and auto-ranging

20% OFF

\$78.28

Order Code
290913902

EL-USB-2 – DATA LOGGER



- Environmental protection to IP67
- Status indication via red and green LEDs
- 4 user-programmable alarms

20% OFF

\$110.20

Order Code
852289802

66.9328-21 – BANANA TEST CONNECTOR



- Spring-loaded MULTILAM
- Contact plating: Nickel plated contacts
- Product range: XZGL-425 series

40% OFF

\$10.70

Order Code
108485202

MP770802 – BNC BREAKOUT



- BNC test lead
- BNC jack to hook clips
- 60V voltage rating

30% OFF

\$9.96

Order Code
370363802

MP761076 – CLAMP METER



- VFC (UT210E/UT211B)
- MAX/MIN (UT210B/C)
- Auto range

20% OFF

\$204.94

Order Code
438735202

Seamless components for smarter systems

22.1004 + 22.2030-22 – BANANA TEST CONNECTOR



- 30VAC voltage rating
- Contact termination type: Solder
- Current rating: 10A

40% OFF

\$13.29

Order Code
108548902

930176100 – BINDING POST



- 60VDC rated voltage
- 32A rated current
- PF housing material

40% OFF

\$6.88

Order Code
117642802

180390011 – CABLE CONTINUITY TESTER



- Continuously-sequencing LED display provides a diagnostic readout
- Ergonomically designed hand-held unit is lightweight, rugged, and impact-resistant
- 9V alkaline battery included

30% OFF

\$141.34

Order Code
64893002

72-2985 – CLAMP METER



- DC voltage range of 200mV/2V/20V/200V/600V
- AC voltage range of 2V/20V/200V/600V
- AC current range from 2A/20A/100A

20% OFF

\$92.91

Order Code
266718002

P100-H-250-G – CONTACT

- 6.3mm full travel
- Spring pressure: 250g
- Current rating : 3A



40% OFF

\$0.560

Order Code
156826802

EXPLORE MORE: nz.element14.com/connect-magazine**MP770279 – ALLIGATOR CLIP TEST LEAD** **multicomp**^{PRO}

- 30V AC/60V DC, 10A rated
- Insulator colour: red
- Lead length - metric length: 305mm

40% OFF**\$3.62**Order Code
329013102**MP770275 – ALLIGATOR CLIP TO BANANA PLUG TEST LEAD** **multicomp**^{PRO}

- 30V AC/60V DC, 5A rated
- Lead length - metric: 610mm
- Banana plug type: 4mm Stackable banana plug

40% OFF**\$4.26**Order Code
329012502**BU-60 – CROCODILE CLIP**

- Compatible with all shrouded, unshrouded and retractable 0.16" (4mm) banana plugs
- Can also be attached by solder or crimp connection
- Mates with BU-62 series PVC insulators

10% OFF**\$0.635**Order Code
283408502**CP-09 – CURRENT PROBE**

- Extends the current ranges for all multimeters
- 200A AC current
- Clamp-on adaptor with voltage output

10% OFF**\$19.30**Order Code
100303602**72-13200 – DC ELECTRONIC LOAD**

- Battery test, automatic test, OPP test, OCP test functions
- Dynamic mode up to 10kHz
- Resolution of voltage and current 0.1mV/0.1mA

30% OFF**\$353.98**Order Code
284840602**MP701077 – DECADE BOX****multicomp**^{PRO}

- Capacitance ranges: 0.1nF to 11.111uF (0.1nF steps)
- Internal capacitance: 0.05nF
- Voltage limit: 50V DC

20% OFF**\$70.07**Order Code
439775002**MP701033 – DECADE BOX****multicomp**^{PRO}

- Resistance ranges: 1Ω to 11Ω, 111Ω, 1111Ω in 1Ω steps
- Internal resistance: approx. 0.3Ω
- Power: 0.3W resistors

20% OFF**\$60.84**Order Code
424590302**GPT-9802 – ELECTRICAL SAFETY TESTER**

- Provides solid foundation for reliable, safe and practical safety compliance testing
- 0.050KV to 5.000KV AC withstanding, 0.050KV to 6.000KV DC withstanding
- RS-232C, USB, signal I/O and GPIB (optional) interface, 100 memory block for test condition setting

10% OFF**\$2,011.79**Order Code
274853202**ESR70 – ESR+ CAPACITANCE AND ESR METER**

- 10x faster capacitance measurement for large capacitors
- Enhanced user options system
- New triple-slope measurement system to vastly reduce the influence of parallel resistance and/or leakage current on capacitance measurements

10% OFF**\$180.84**Order Code
349855802**72-3555 – FUNCTION GENERATOR**

- CAT II 300V safety standards
- 6 digit high precision frequency meter compatible with TTL level signal
- Easy to use operating panel

10% OFF**\$599.40**Order Code
266718802**SFG-1013 – FUNCTION GENERATOR**

- 6 digit LED display
- DDS technology and FPGA design
- 0.1Hz to 3MHz frequency range

10% OFF**\$306.73**Order Code
156380502**MP780430 – IMPEDANCE METER****multicomp**^{PRO}

- 30V to 600V AC measurement range
- 45Hz to 65Hz frequency range
- 1V resolution

30% OFF**\$219.61**Order Code
339475702**72-9400A – INSULATION TESTER**

- 2000 count LCD backlit display
- Alarm light display and buzzer
- Auto ranging

20% OFF**\$104.44**Order Code
249951802**multicomp**^{PRO}

MP780904 – SOUND LEVEL METER



- Provides 1.4dB accuracy
- Newly design shape
- High performance

30% OFF

\$99.97

Order Code
401626002

BU-24APN – TEST CLIP



- Length: 72mm
- Jaw opening max: 19mm
- Connector type: Grounding clip

20% OFF

\$2.61

Order Code
283406402

6342 – TEST LEAD SET



- Black and red probe with sharp point gold pogo pin tips
- 1000Vrms maximum operating voltage
- Miniature probe is the perfect size for probing tiny, high-density circuits

10% OFF

\$70.63

Order Code
413578702

NGU401COM – SOURCE MEASURE UNIT SMU



- It can act as bipolar power supply or bipolar electronic load
- It comes with a modulation I/P to connect an arbitrary generator enabling it to act as an AC source
- Fast load regulation

\$13,574.67

Order Code
362527102

571-0500 – TEST JACK



- 10mΩ maximum contact resistance
- Current rating: 10A
- For use with 4mm Dia test plugs

20% OFF

\$1.86

Order Code
149459302

KA01 – THERMOCOUPLE



- PTFE fine wire sensors
- Class 1 material

30% OFF

\$10.76

Order Code
492097102

Seamless components for smarter systems

72-14565 – TEST ACCESSORY



- Accessory type: K-Type thermocouple adaptor
- For use with digital multimeters
- Converts the K-type plug to dual

20% OFF

\$0.942

Order Code
347918602

TEN01014 – TEST LEAD SET



- Voltage rating: 30V AC, 60V DC
- Length: approx 850mm

20% OFF

\$2.33

Order Code
349855502

450-3326-01-03-00. – TURRET SOLDER / PRESS MOUNT TERMINAL



- 16AWG wire size
- 0.56mohm contact resistance
- 3.5A rated current

40% OFF

\$0.739

Order Code
165468402

“

We're thrilled to continue partnering with you to deliver innovative solutions that drive the growth and success of your business. Let's make 2025 another remarkable year of innovation for your team and organisation.

Stay tuned for exciting marketing campaigns and exclusive deals tailored to your needs. Our team is working tirelessly and can't wait to share what's next!

”



Tess Turner
Marketing Manager
ANZ & KR



multicomp^{PRO}

The engineer's choice for tests, tools, production supplies, connectors, cables, wires, electromechanical, passives, and semiconductors.



To view more products, scan the QR code or visit: nz.element14.com/Connect48MulticompPro

MP011739 – HMI TOUCH SCREEN

multicomp^{PRO}



- Hardware includes CPU Cortex A7 528MHz, 128M flash, 128M DRAM III RAM
- 800 × 480 resolution LCD with 16000k colours
- Interface includes COM1: RS485/RS422; COM2: RS232

5% OFF

\$404.14

Order Code
416923102

MP3238.230 – ENCLOSURE COOLING

multicomp^{PRO}



- Frame size of 148mm
- Impeded air flow of 65-85m3/h
- Powered by self-starting shaded pole motor

20% OFF

\$75.89

Order Code
416343802

MP011250 – ROCKER SWITCH

multicomp^{PRO}



- Contact voltage VAC: 250V
- Switch mounting: Panel mount
- Switch terminals: Quick connect

40% OFF

\$6.19

Order Code
414311702

MP-19Z11FNNS – VANDAL RESISTANT SWITCH

multicomp^{PRO}



- SPST, 2P, maintained, anti vandal switch
- 6A 125/250V, 6A 3-48VDC ratings
- 50mohm (maximum) initial contact resistance

40% OFF

\$14.16

Order Code
422571102

MP-335PAS-1 – PANEL METER

multicomp^{PRO}



- 4-digit programmable projection
- Fast stabilization period within 2mins
- 14mm digit height user-friendly panel

20% OFF

\$274.48

Order Code
420352702

MP-008 – SWITCH

multicomp^{PRO}



- 8-port 10/100Mbps Ethernet switch
- Power input of +5V to +30VDC
- Wide temperature range from -10°C to +60°C

20% OFF

\$136.40

Order Code
430549002

MP-AP2E-BTE01R – EMERGENCY STOP SWITCH

multicomp^{PRO}



- Mechanical lifetime: 300,000 cycles
- Rotate release switch with SPST configuration
- Operating temperature range: -25°C to 70°C

40% OFF

\$22.13

Order Code
420826602

MP-D16LMT1-1CB – INDUSTRIAL PUSHBUTTON SWITCH

multicomp^{PRO}



- IP rating: IP40
- Switch terminals: Solder lug
- Pushbutton actuator style: Rectangular

40% OFF

\$19.99

Order Code
420828702

MP011734 – HEATER

multicomp^{PRO}



- 15W heating capacity
- PTC resistor, self regulating heating element
- Anodized aluminium profile body

20% OFF

\$51.39

Order Code
416922602

MP-C40 – AUTOMATIC TRANSFER SW CONTROLLER

multicomp^{PRO}



- Under/over voltage protection
- Phase sequence/unbalanced current protection
- Configurable timer for generator start, transfer delay, restore delay, and generator cooling time

20% OFF

\$452.85

Order Code
420350802

MP-MS-213-3-1-0500 – REED SENSOR

multicomp^{PRO}



- Easy mounting and fixing, fitted with wire leads, compact size
- Compact housing, mechanically protected
- UL approval, replaces various competitors types

40% OFF

\$5.98

Order Code
426143802

MP-RR036 – ROCKER SWITCH

multicomp^{PRO}



- 12VDC to 24VDC rating, RED LED 12/24VDC lamp
- Switch action of ON-OFF, SPST, 3P, LED illumination
- 30Mohm maximum contact resistance, 100Mohm minimum insulation resistance (500VDC)

40% OFF

\$3.00

Order Code
426143102

Seamless components for smarter systems

MPADP16B4-0R0-0240 – BUZZER

multicomp^{PRO}



- Intermittent tone, soldering type / plug in type terminal
- 3A current rating, supply voltage range from 12 to 24VDC
- 80db sound pressure, 1000hr electrical lifetime

30% OFF

\$26.92

Order Code
437797902

ABS-210-RC – SPEAKER

multicomp^{PRO}



- Rated impedance is 8ohm
- Nominal power is 1W
- Frequency range: 0Hz to 20KHz

30% OFF

\$3.35

Order Code
130002202

GW-151641 – MAINS POWER CORD

multicomp^{PRO}



- Jacket colour : Black
- Number of conductors : 3
- Insulation(Single or Double) : Single

40% OFF

\$10.53

Order Code
250579102

MP-CMA5GH-S-DC5V-A – AUTOMOTIVE RELAY

multicomp^{PRO}



- Contact material: Silver alloy
- Insulation resistance : Min.100MΩ at 500V DC
- Operating temperature : -40°C to +85°C

45% OFF

\$1.82

Order Code
420861502

MCP00022 – WIRE

multicomp^{PRO}



- Flexible, PVC insulated wire
- Tinned, annealed, copper conductors

40% OFF

\$17.27

Order Code
325381902

5501-09SA-02-F1 – D SUB CONNECTOR

multicomp^{PRO}



- Current rating is 3A AC/DC
- Voltage rating is 250VAC/DC
- Operating temperature range from -40°C to 85°C

40% OFF

\$0.353

Order Code
108467802

MPAD06NF-2JR24V – LED PANEL MOUNT INDICATOR

multicomp^{PRO}



- LED colour: Red
- Operating voltage: 24V
- IP / NEMA rating: IP65

40% OFF

\$3.99

Order Code
434974302

MCL053MD – LED

multicomp^{PRO}



- 85mW power dissipation
- Operating temperature range: -40 to +85°C

45% OFF

\$0.125

Order Code
158113702

MP011359 – TRIPOD MOUNT

multicomp^{PRO}



- Pipe material: Galvanized steel
- Fixing plate: Cold-rolled steel
- Pipe diameter and thickness: Ø32 × T1.5

20% OFF

\$44.24

Order Code
415361802

“

Multicomp Pro is excited to be celebrating its 5-Year Anniversary! When the brand was launched, our objective was to offer improved quality and value to electrical engineers at all stages of their projects—from prototype to production, and even for students.

Over the last 5 years, it's been wonderful to see the brand grow and continue to expand its product range. Even better has been the positive feedback from our customers, which reinforces our belief that Multicomp Pro is the Engineer's Choice.



John Casiello
Global Marketing
Multicomp Pro

”



multicomp PRO

THE ENGINEER'S CHOICE

For Quality & Value From Prototype to Production

Multicomp Pro understands that engineers require cost-effective, reliable solutions.

Regardless of if you are starting a prototype, in mass production or maintenance and repair operations, Multicomp Pro offers the electronic components and equipment that engineers need with the quality and value they require.



Learn more:
nz.element14.com/multicomp-pro



SEMICONDUCTORS

Accelerate innovation. Power your next breakthrough with our catalogue of semiconductors, including ICs, discretes, transistors, and more.



To view more products, scan the QR code or visit: nz.element14.com/Connect48Semiconductors

IA186XLPLC68IR2 – 16 BIT MICROCONTROLLER



- DRAM refresh control unit, power-save mode
- Static, modular CPU, clock generator, two independent DMA channels
- Programmable interrupt controller, three programmable 16-bit timers

20% OFF

\$59.41

Order Code
403375502

IA188XLPLC68IR2 – 16 BIT MICROCONTROLLER



- Local bus controller, power-save mode
- Direct addressing capability to 1MByte memory and 64Kbyte I/O
- Supply current is 90mA typical

3% OFF

\$49.44

Order Code
403375802

PIC12LF1822-I/MF – 8 BIT MCU, FLASH



- 49 (14-bit wide) easy instructions to learn
- 16 level hardware stack
- 2 (16-bit) file select registers

\$2.21

Order Code
181491402

PIC12F635-I/P – 8 BIT MCU



- 35 (14-bit wide) easy instructions to learn
- 8 level hardware stack
- 1 (9-bit) file select register

3% OFF

\$3.34

Order Code
121268702

INN4073C-H182-TL – AC / DC CONVERTER



- Zero voltage switching (ZVS) flyback controller with driver for ClampZero™ (active clamp IC)
- Unique control algorithm to enable ZVS in both DCM and CCM
- Robust 750V PowiGaN™ primary switch

3% OFF

\$4.97

Order Code
377166102

INN4074C-H182-TL – AC / DC CONVERTER



- Integrated FluxLink, HIPOT-isolated, feedback link
- Exceptional CV/CC accuracy, independent of external components
- Adjustable accurate output current sense using external sense resistor

3% OFF

\$5.38

Order Code
377166202

VIPERGAN100TR – AC / DC CONVERTER



- Quasi-resonant (QR) flyback controller, 650V E-mode power GaN transistor
- Embedded sense FET, valley-lock to ensure constant valley skipping
- Advanced power management for less than 30mW standby power consumption with adaptive burst-mode

20% OFF

\$6.69

Order Code
414249702

DG509ACJ+ – ANALOGUE MULTIPLEXER



- Supply voltage range is ±4.5V to ±18V
- Operating temperature range from 0°C to 70°C
- Break before make switching

30% OFF

\$24.51

Order Code
251384602

ADG801BRMZ – ANALOGUE SWITCH



- On resistance is 0.4ohm maximum at 125°C
- On resistance flatness is 0.08 ohm maximum at 125°C
- Single supply operation is 1.8V to 5.5V

40% OFF

\$4.21

Order Code
402235202

ADCMP604BKSZ-REEL7 – ANALOGUE COMPARATOR



- Fully specified rail to rail at VCCI = 2.5V to 5.5V
- Low glitch LVDS-compatible output stage
- Propagation delay is 1.6ns typical at (VCCI = VCCO = 2.5V to 5V, VOD = 50mV)

40% OFF

\$7.51

Order Code
402260602

ADCMP604BKSZ-R2 – ANALOGUE COMPARATOR



- Power dissipation is 37mW typical at (VCCI = VCCO = 2.5V)
- Power supply rejection ratio is -50dB minimum at (VCCI = VCCO = 2.5V to 5V)
- Input bias current is ±2µA typical

40% OFF

\$9.44

Order Code
402260502

LTC6754HUD#PBF – ANALOGUE COMPARATOR



- Low propagation delay is 1.8ns typ
- Low overdrive dispersion is 1ns typ
- LVDS compatible output stage

40% OFF

\$8.58

Order Code
402278902

EXPLORE MORE: nz.element14.com/connect-magazine

ICL7109CPL+ – ANALOGUE TO DIGITAL CONVERTER



- Zero integrator phase for fast overload recovery
- Hysteresis and crosstalk eliminated
- Enhanced bus driving capability

30% OFF

\$43.89

Order Code
251867402

LPC5534JBD100E – ARM MCU



- High-efficient 40nm flash technology
- Over 600 core mark (4.17 /MHz running in flash with cache) and active power as low as 57uA/MHz
- Enhanced safety and security with TrustZone-M

20% OFF

\$13.69

Order Code
395429502

ADSP-21489KSWZ-3A – AUDIO PROCESSOR



- High performance floating-point processor optimised for high performance audio processing
- Single-instruction, multiple-data (SIMD) computational architecture
- Code compatible with all other members of the SHARC family

10% OFF

\$34.85

Order Code
402571802

CYW20822P4TAI040XUMA1 – BLUETOOTH MODULE



- Up to 12 GPIOs, temperature range from -45°C to +85°C
- 16MHz Arm® Cortex®-M0 microcontroller unit MCU
- 1MB embedded on-module serial flash memory and castelated solder pad connections for ease-of-use

35% OFF

\$8.16

Order Code
438060202

AD7626BCPZ – ANALOGUE TO DIGITAL CONVERTER



- Throughput: 10MSPS, SNR: 91.5dB
- 16bit no missing codes
- INL: ±0.45LSB, DNL: ±0.35LSB

20% OFF

\$99.55

Order Code
401658202

LPC5534JBD64E – ARM MCU



- Comprehensive enablement with MCUXpresso ecosystem
- Integrated power management unit, low power modes, power-on reset (POR), brown-out-detect (BOD)
- FlexComm, I2C-bus, SPI, digital microphone, I3C bus, CAN FD, USB 2.0 full speed interfaces

20% OFF

\$12.89

Order Code
395429602

ADSP-21369KBPZ-3A – AUDIO PROCESSOR



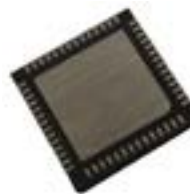
- Single-instruction, multiple-data (SIMD) computational architecture
- Code compatible with all other members of the SHARC family
- S/PDIF-compatible digital audio receiver/transmitter

3% OFF

\$133.62

Order Code
402571002

CYW20829BOLKMLTXUMA1 – BLUETOOTH MODULE



- Datawire (DMA) controller with 16 channels, 32KB cache for greater XIP performance with lower power
- 256KB SRAM with power and data retention control, OTP eFuse array for security provisioning
- 2.4GHz RF transceiver with 50 ohm antenna drive, digital PHY

20% OFF

\$8.22

Order Code
429784502

LPC5534JHI48/00E – ARM MCU



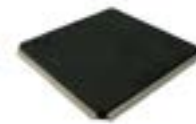
- High-efficient 40nm flash technology
- Over 600 core mark (4.17 /MHz running in flash with cache) and active power as low as 57uA/MHz
- Enhanced safety and security with TrustZone-M

20% OFF

\$9.37

Order Code
395429702

ADSP-21371KSWZ-2B – AUDIO PROCESSOR



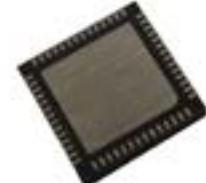
- 266MHz instruction rate
- 1Mbit on chip SRAM
- 4Mbit ROM, JTAG access to memory permitted with a 64-bit key

20% OFF

\$53.62

Order Code
402571202

CYW20829BOLKMLXQLA1 – BLUETOOTH MODULE



- Six power modes for fine-grained power management
- Deep sleep mode current of 4.5µA with 64KB SRAM retention
- On-chip DC-DC buck converter, 8MHz internal main oscillator (IMO) with ±2% accuracy

20% OFF

\$8.22

Order Code
429784402

NCP5111DR2G – DUAL DRIVER IC



- High and low drive outputs
- Up to VCC swing on input pins
- Extended allowable negative bridge pin voltage swing to -10V for signal propagation

40% OFF

\$1.38

Order Code
154713802

FAN7382MX – DUAL MOSFET DRIVER



- Floating channels designed for bootstrap operation to +600V
- Common-mode dv/dt noise cancelling circuit
- UVLO functions for both channels

\$1.61

Order Code
122825202



CY8CKIT-062S4 – EMBEDDED DEVELOPMENT KIT

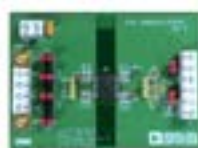


- 512Mbits quad SPI nonvolatile flash provides high-performance, safe NOR flash memory solution
- Rich analogue including dual SAR ADCs, DAC, Opamps and comparators
- Capable of operating in system deep sleep mode

\$104.64

Order Code
385868202

EVAL-ADM2682EEBZ – EVALUATION BOARD



- 5KV RMS power and signal isolated RS-485/RS-422 transceiver
- Convenient connections for power and signal through screw terminal blocks
- Configurable as half duplex or full duplex

\$169.87

Order Code
403300502

EK-VCK190-G – EVALUATION KIT



- Equipped with Versal ACAP VC1902 production silicon
- AI and DSP engines providing 100X greater compute over today's server-class CPUs
- Pre-built partner reference designs for rapid prototyping

\$24,809

Order Code
392470002

MAX14939GWE+ – RS485 TRANSCEIVER ISOLATED



- UL according to UL1577, cUL according to CSA bulletin 5A, VDE 0884-10 (safety approval)
- Integrated LDO for cable-side power, compliant with RS-485 EIA/TIA-485 standard
- 20Mbps maximum data rate, allows up to 128 devices on the bus

30% OFF

\$15.05

Order Code
261269602

XP1001000-05R – EMBEDDED DEVICE SERVER MODULE



- Complete, integrated solution in an RJ45 form factor
- Embedded web server
- 10/100Mbit Ethernet (auto sensing)

\$104.28

Order Code
211525902

EVAL-ADM2863EEBZ – EVALUATION BOARD



- Simplified evaluation of the ADM2863E transceiver
- 2-layer PCB compliant to EN 55032/CISPR 32 Class B radiated emissions
- On-board ADP7104 LDO regulator with jumper for simplified evaluation in 5V or 3.3V configuration

\$172.45

Order Code
403300902

EK-U1-ZCU111-G – EVALUATION KIT



- DDR4 component – 4GB, 64-bit, 2666MT/s, attached to Programmable Logic (PL)
- DDR4 SODIMM – 4GB 64-bit, 2400MT/s, attached to Processor Subsystem (PS)
- Ganged SFP28 cage to support up to 4 SFP/SFP+/zSFP+/SFP28 modules

\$28,193.54

Order Code
298466602

AUV4-PSD0-OMPOH – UV EMITTER



- 1W 3535 surface mount UV LED
- High-reliability package with enhanced silicone resin encapsulation
- Wide viewing angle at 130°

10% OFF

\$4.31

Order Code
406131602

Seamless components for smarter systems

AR35-J13T – ENCODER ALIGNMENT JIG



- AR35 through hollow with 8mm shaft
- Product range: AR35-T25 series
- User-programmable resolution up to 25 bits single turn

\$1,009.03

Order Code
406350002

EVAL-ADM2867EEBZ – EVALUATION BOARD



- Simplified evaluation of the 25Mbps ADM2867E RS-485 transceiver
- 2-layer PCB compliant to EN 55032 Class B radiated emissions
- On-board ADP7104 LDO regulator with jumper for simplified evaluation in 5V or 3.3V configuration

\$181.01

Order Code
403301102

ST485ERBDR – RS422/RS485 TRANSCEIVER



- Designed for RS-485 interface applications
- Common mode input voltage range from -7V to 12V
- Driver maintains high impedance in 3-state or with the power OFF

30% OFF

\$2.77

Order Code
312991202

AUV3-ST32-OSV0K – UV EMITTER



- High-reliability package with quartz lens
- High-radiant flux output using InGaN dice technology
- Compatible with the reflow soldering process

30% OFF

\$12.98

Order Code
406131402

ADV7393BCPZ – VIDEO ENCODER



- Patented content-dependent low-power DAC operation
- Automatic cable detection and DAC power-down, individual DAC on/off control
- Sleep mode with minimal power consumption, copy generation management system (CGMS)



AHEAD OF WHAT'S POSSIBLE™

30% OFF

\$17.65

Order Code
402372502



AHEAD OF WHAT'S POSSIBLE™



GIGABIT MULTIMEDIA SERIAL LINK (GMSL) CAMERAS AS AN ALTERNATIVE TO GIGE VISION CAMERAS

GMSL cameras often can provide equivalent or better link rates and features at a lower cost, lower power consumption, and simpler system architecture with a smaller system footprint.

Visit our website to explore the latest 'ADI', Gigabit Multimedia Serial Link (GMSL) serialiser development platforms.



Learn more:
nz.element14.com/Connect48ADI



OUR SERVICES

Take advantage of our local services



A global electronics distributor that provides you with local support

In person, via phone and online



Dedicated account management

Account holders will be assigned an individual account manager to help with your queries, product resourcing and orders



Quoting on volume requirements

Dedicated team to assist in quoting you the best possible price



Not in catalogue sourcing

When a product is not available in our range, our team can help you source it directly from the manufacturer



Contract pricing

Special pricing is available for eligible customers



Flexible scheduled ordering

Place an order now and opt to schedule its delivery for a later date



Exclusive buffer stock arrangements

Reserve stock now for a future order - available for qualified customers

Customer Service

0800 90 80 80

Monday to Friday 10:00 AM - 8:30 PM (NZDT)

nz-sales@element14.com

24/5 Online Live Chat

Technical Support

For Account Customers Only

0800 90 80 83

Monday to Friday 10:00 AM - 8:30 PM (NZDT)

nz-technical@element14.com

Online Live Chat

Account Enquiries

0800 90 80 88

nz-finance@element14.com

Quote Requests

0800 90 80 86

Monday to Friday 10:00 AM - 8:00 PM (NZDT)

nz-quotes@element14.com



Scan the QR code to view more ways to contact us

Returns Policy

Call **0800 90 80 80**, email nz-sales@element14.com or visit our website and complete the online RMA request form. Upon authorisation, you will need to return the product in its original packaging. Few conditions apply. Refer to the element14 'Standard Terms and Conditions of Sale' that is available at nz.element14.com/help-return-policy.

Terms & Conditions

- All products shown in this issue of Connect (the 'Publication') are subject to availability and all sales of these products are subject to element14's standard terms and conditions of sale as set out on element14 website. To obtain a copy, call **0800 90 80 80** or visit: nz.element14.com/terms-and-conditions
- The publication, products and prices are valid between **1st January and 31st March 2025**
- All savings shown in the publication are against the prices on the element14 website (nz.element14.com) as of **November 2024** and are subject to change
- Connect savings cannot be used in conjunction with any discount and/or offer
- Any further discount (special pricing, quote discounts, discount vouchers, etc.) is not applicable on Connect products
- Prices in the publication exclude delivery charges & GST. Prices are inclusive of any discount mentioned in the publication
- element14 reserves the right to withdraw any product from sale for legal or commercial reasons
- Changes may be made to products and prices by element14 and/or our suppliers
- The products in the publication are meant for business customers and consumers. By ordering, the customers confirm that they wish to obtain the supplies for their business or personal purposes and not for reselling
- While every effort has been made to ensure the accuracy of the information in the publication, element14 does not warrant the accuracy or completeness of the information and accepts no liability for errors in, or omissions from the publication, including those arising from our negligence
- Orders must be placed before 9 PM. For more details visit: nz.element14.com/help-delivery-information



LISTEN TO TOP TECH VOICES

Get inspired by the experts transforming the
tech landscape



Life Is On



nz.element14.com/top-tech-voices